

see what Delta can do™

BATHROOM FAUCET

- Trinsic® Collection
- High Arc Swivel Spout

FEATURES:

- Euro-Motion Diamond™ Valve

STANDARD SPECIFICATIONS:

- Max. flow rate 1.2 gpm @ 60 psi, 4.5 L/min @ 414 kPa (559HA-DST)
- Max. flow rate 1.0 gpm @ 60 psi, 3.8 L/min @ 414 kPa (559HA-GPM-DST)
- One or hole mount (optional escutcheon RP100091 not included)
- Spout swivels 360°
- Solid metal construction
- Diamond coated ceramic cartridge
- Optional red/blue indicator ring provided with model
- Model has metal drain with push pop-up type fitting with plated flange and stopper, no lift rod hole
- 1/4" O.D. straight, staggered PEX supply lines

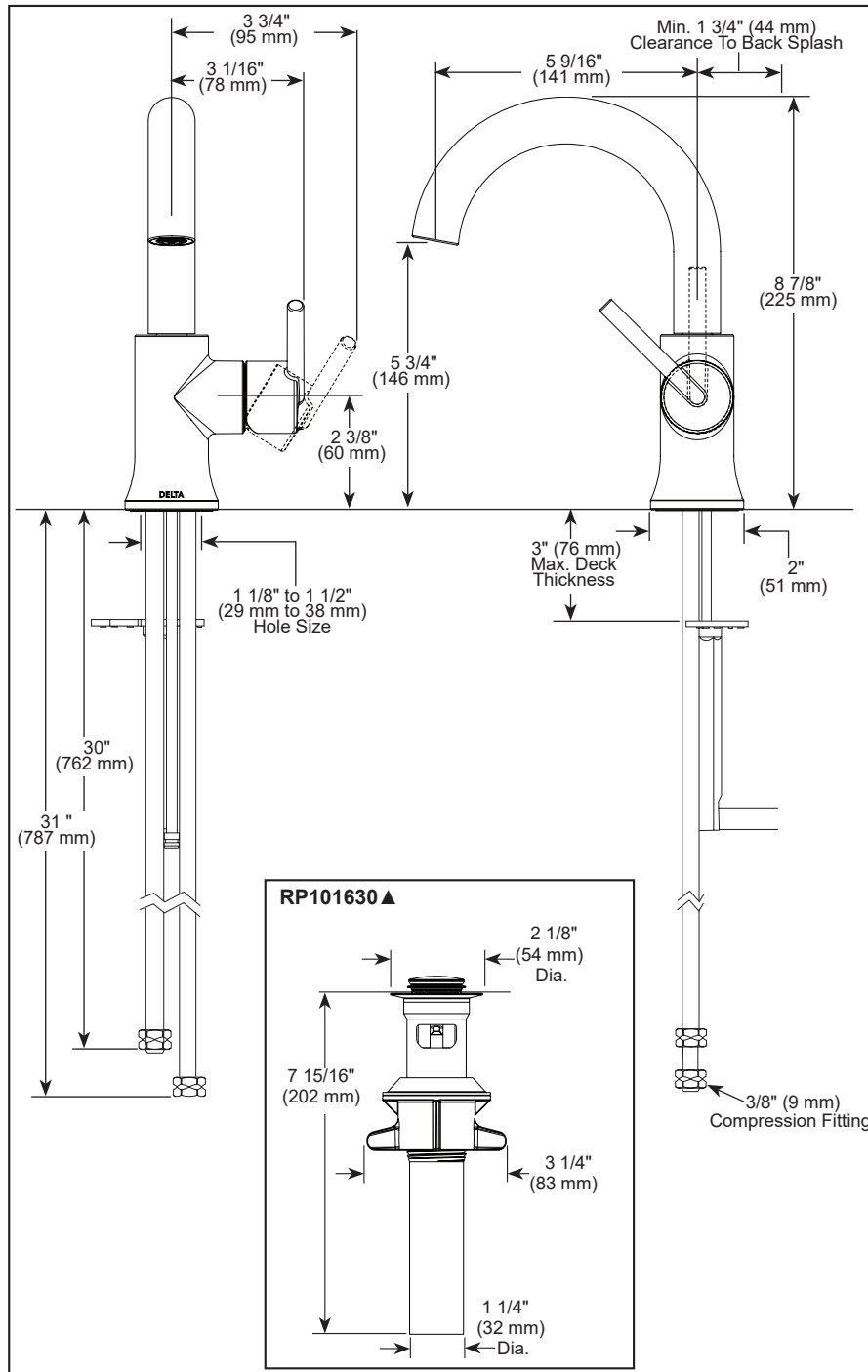
WARRANTY

- Parts and Finish - Lifetime limited warranty; or for commercial purchasers, 10 years for multi-family residential (apartments and condominiums) and 5 years for all other commercial uses, in each case from the date the product is received by the original purchaser or their authorized representative (installation contractor, etc.).
- Electronic Parts and Batteries (if applicable) - 5 years from the date the product is received by the original purchaser or their authorized representative (installation contractor, etc.); or for commercial purchasers, 1 year from the date the product is received by the original purchaser or their authorized representative (installation contractor, etc.). No warranty is provided on batteries.



COMPLIES WITH:

- ASME A112.18.1 / CSA B125.1
- ASME A112.18.2 / CSA B125.2
- Indicates compliance to ICC/ANSI A117.1
- EPA WaterSense®



▲ Designate Proper Finish Suffix

Delta reserves the right (1) to make changes in specifications and materials, and (2) to change or discontinue models, both without notice or obligation. Dimensions are for reference only. See current full-line price book or www.deltafaucet.com for finish options and product availability.

DSP-L-559HA-DST Rev. F

Delta Faucet Company

55 E. 111th Street, Indianapolis, IN 46280
350 South Edgeware Road, St. Thomas, ON N5P 4L1
© 2023 Delta Faucet Company